

A6 Wear Parts Catalogue

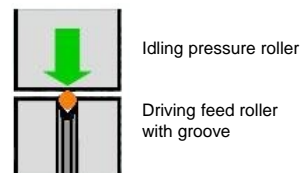
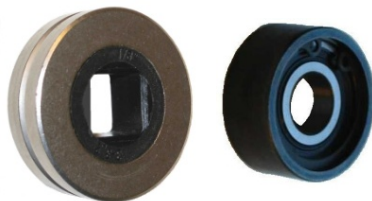
SECURE YOUR WELDING QUALITY WITH
ESAB ORIGINAL PARTS



A6 powerful feed rollers for SAW single or twin wire

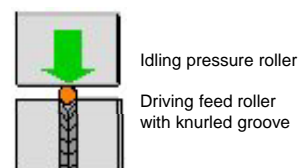
Feed roller, single wire

Wire dim	Part No.
1.6 mm	0218 510 281
2.0 mm	0218 510 282
2.4-2.5 mm	0218 510 283
3.0-3.2 mm	0218 510 298
4.0 mm	0218 510 286
5.0 mm	0218 510 287
6.0 mm	0218 510 288
Pressure roller	0153 148 880



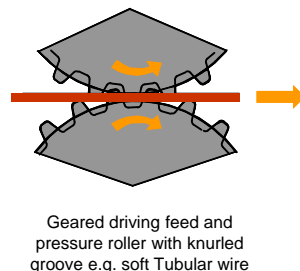
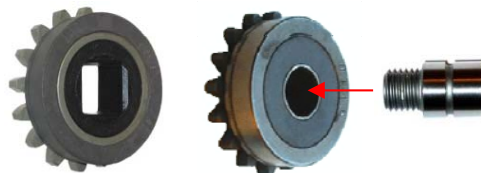
Feed roller, single wire, Knurled V-groove

Wire dim	Part No.
3.0-5.0 mm	0218 510 299
Pressure roller	0153 148 880



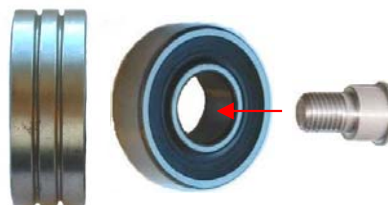
Feed roller, single wire with 2-roller drive, Knurled U-groove

Wire dim	Part No.
Feed roller	
0.8-1.6 mm	0146 024 880
2.0-4.0 mm	0146 024 881
Pressure roller	
0.8-1.6 mm	0146 025 880 *)
2.0-4.0 mm	0146 025 881 *)
*) Shaft for pressure roller	0212 901 101

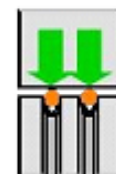


Feed roller, Twin wire

Wire dim	Part No.
2x1.2 mm	0218 522 486
2x1.6 mm	0218 522 488
2x2.0 mm	0218 522 484
2x2.4-2.5 mm	0218 522 480
2x3.0-3.2 mm	0218 522 481



Spherical idling pressure roller for equal distributed pressure on the two wires



Driving feed with grooves for Twin wire system

Feed roller, Twin wire, Knurled U-groove

Wire dim	Part No.
2x2.0-3.2 mm	0148 772 880
Pressure roller	
Spherical type with shaft	0218 524 580

D20 Light duty system with superb access to narrow spaces

D20 Straight contact tube

Length	Part No.
100 mm	0413 510 003
190 mm	0413 510 002
260 mm	0413 510 001
500 mm	0413 510 004



D20 Bent contact tube 30 deg.

Length	Part No.
260 mm	0413 511 001
D20 contact clamp	0334 571 880

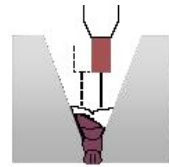
SAW Contact nozzles for Light duty system

SAW Contact nozzle M12 for single wire

Wire dim	Part No.
1.6 mm	0154 623 008
2.0 mm	0154 623 007
2.4-2.5 mm	0154 623 006
3.0 mm	0154 623 005
3.2 mm	0154 623 004
4.0 mm	0154 623 003



D20 – Slim design for improved access into narrow V-joints



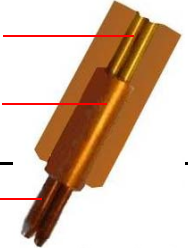
SAW Contact nozzle M6 for twin wire

Wire dim	Part No.
2x1.2 mm	0153 501 005
2x1.6 mm	0153 501 007
2x2.0 mm	0153 501 009
2x2.4-2.5 mm	0153 501 010



Guide tube, L=358, D6/4
 Guide tube, L=750, D6/4
 Spiral insert, L=366, D3.5/1.5
 Nozzle holder

0415 032 001
 0415 032 002
 0334 279 001
 0333 772 001

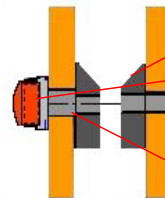


Contact nozzle x2

D35 Heavy duty system

D35 Straight contact tube

Length	Part No.
220 mm	0417 959 880
275 mm	0417 959 881
400 mm	0417 959 882
500 mm	0417 959 883
700 mm	0417 959 884
Clamp half	0809 342 880



Ring 0417 979 001
 Washer D22x10.5x2
 Spring washer D20/10.2x1.1
 Screw M8x16
 Bolt M8 0443 372 001

Contact jaws for Heavy duty system

SAW Contact jaws for single wire, Length 65/58 mm

Wire dim	Part No.
2.0 mm	0332 581 880
2.4-2.5 mm	0332 581 881
3.0 mm	0265 900 880
3.2 mm	0265 900 881
4.0 mm	0265 900 882
5.0 mm	0265 900 883
6.0 mm	0265 900 884

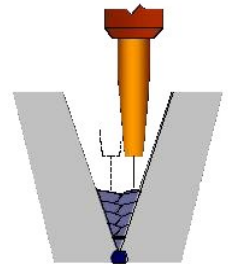


L = 65 mm
 0332 581 880-881



L = 120 mm
 0000 237 320-321

Long contact jaws 120 mm for improved access to deep joints



Length 120 mm

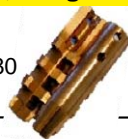
3.0 mm	0000 237 320
4.0 mm	0000 237 321



L = 58 mm
 0265 900 880-884

SAW Contact jaws for single wire, Length 75 mm

Wire dim	Part No.
1.6-3.0 mm	0265 901 480



Durable contact jaws for all wire dimensions between 1.6-3.0 mm

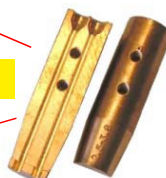
SAW Contact jaws for twin wire, Length 73 mm

Wire dim	Part No.
2x1.6 mm	0265 902 882
2x2.0 mm	0265 902 881
2x2.4-2.5 mm	0265 902 884
2x2.5-3.0 mm	0265 902 880



Length 73 mm with guide tube connection

2x1.6 mm	0808 650 882
2x2.0 mm	0808 650 881
2x2.5-3.0 mm	0808 650 880



Length 120 mm with guide tube connection

2x1.6 mm	0816 019 882
2x2.0 mm	0816 019 881
2x2.4-2.5 mm	0816 019 883
2x2.5-3.0 mm	0816 019 880

SAW Contact jaws for ICE™

Contact jaw, 2.5 mm
 Ceramic sleeve
 Wire guide

Part No.
 0819 882 880
 0819 883 001
 0824 038 001



ICE Wear kit

0824 376 880

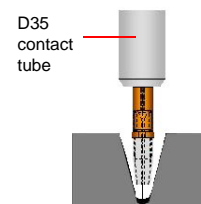
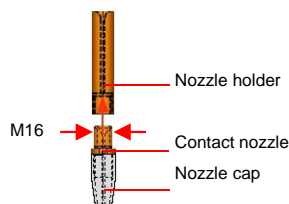
3 pcs Contact jaw, 2.5 mm
 3 pcs Ceramic sleeve
 1 pc Feed roller 2.5 mm



Insulated contact nozzle with nozzle cap for narrow V-joints

Insulated contact nozzle with nozzle cap for narrow V-joints

Nozzle holder	0000 237 415
Nozzle with cap 2.0 mm	0000 237 329
Nozzle with cap 2.5 mm	0000 237 328
Nozzle with cap 3.0 mm	0000 237 330
Nozzle with cap 3.2 mm	0000 237 332
Nozzle with cap 4.0 mm	0000 237 327
Nozzle cap	0000 237 331



Guide tube, single wire, max 3.2 mm

Length 358 mm, D6/4	0415 032 001
Length 750 mm, D6/4	0415 032 002 *)
Clamp	0218 514 001



Single wire



Twin wire

Note!

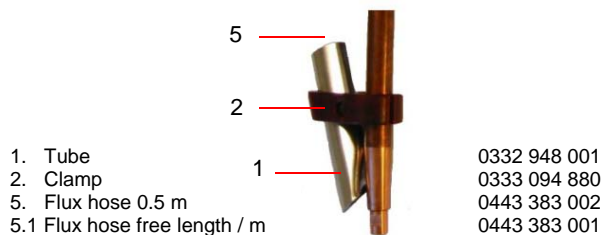
*) Guide tube 750 mm to be cut to suit the length of contact tube.
**) E.g. 2x358 mm for 275 mm contact tube.

Guide tube twin wire

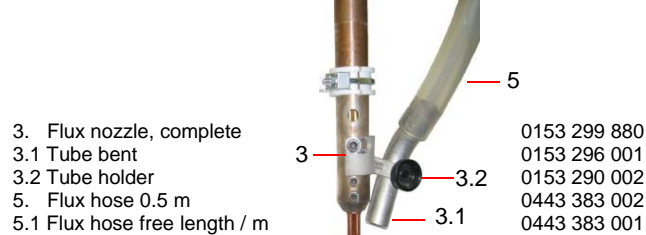
Length 358 mm, D6/4	0415 032 001 **)
Length 750 mm, D6/4	0415 032 002 *)
Clamp	0218 518 201

Flux nozzle

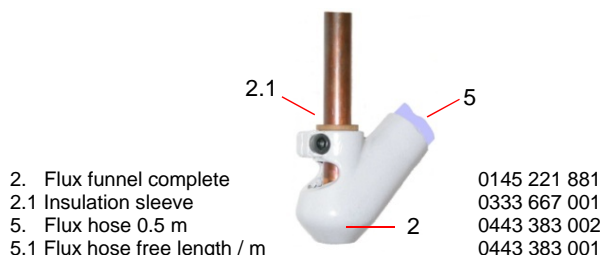
D20 Contact tube



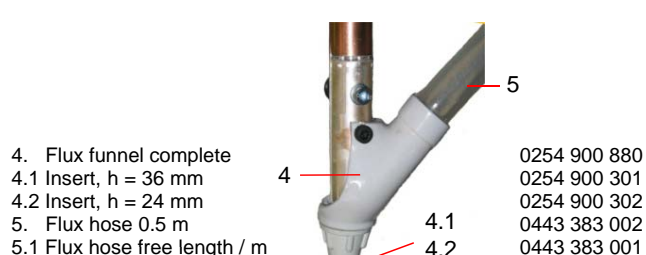
D35 Contact tube



D20 Contact tube



D35 Contact tube

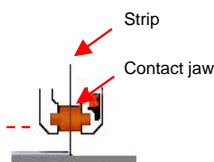


Contact jaws for SAW cladding assembly

A6 SAW cladding head

Contact jaws 0148 325 001

12 pcs required for complete assembly



2011-10-21 / ESAB reserves the right to alter specifications without prior notice



ESAB AB
SE-695 81 LAXÅ, Sweden
Phone: +46 584 81000
E-mail: info@esab.se
www.esab.com

