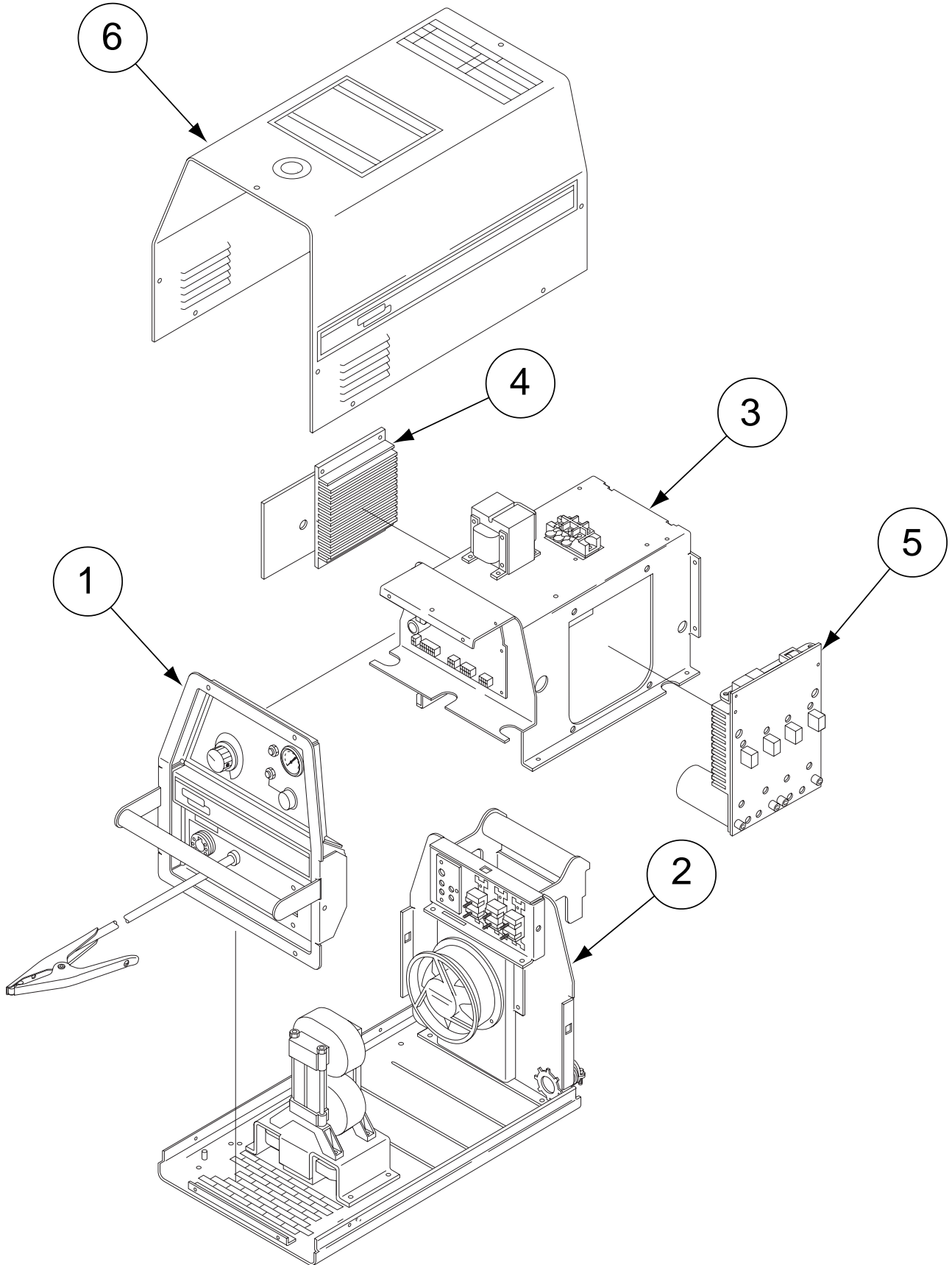


PARTS LIST FOR PRO-CUT 80

Index of Sub Assemblies
Illustration of Sub Assemblies
Index of Sub Assemblies
Illustration of Sub Assemblies
Index of Sub Assemblies
Illustration of Sub Assemblies
Index of Sub Assemblies
Illustration of Sub Assemblies

Main Assembly



PRO-CUT 80

For Codes: 10573 to 11024

Do Not use this Parts List for a machine if its code number is not listed. Contact the Service Department for any code numbers not listed.

Use the Illustration of Sub-Assemblies page and the table below to determine which sub assembly page and column the desired part is located on for your particular code machine.

Sub Assembly Item No.			1	2	3	4	5	6	
SUB ASSEMBLY PAGE NAME	Optional Equipment	Miscellaneous Items	Case Front Assembly	Base & Case Back	Center Panel Assembly	Output Board Heatsink	Power Board Heatsink	Wraparound Assembly	PCT 80 Torch & Cable
PAGE NO. →	P-340-B.1	P-340-B.2	P-340-C	P-340-D	P-340-E	P-340-F	P-340-G	P-340-H	P-210-K
CODE NO. ↓									
10573 (Domestic) (208/230/460/1/3/50/60)		1	1	1	1	1	1	1	1
10574 (Domestic) (208/230/460/1/3/50/60)		1	1	1	1	1	1	1	1
10575 (Canadian) (460/575/3/50/60)		1	1	2	2	2	2	2	1
10576 (Canadian) (460/575/3/50/60)		1	1	2	2	2	2	2	1
10577 (Export) (200/380-415/3/50/60)		1	1	3	3	1	1	1	1
10578 (Export) (200/380-415/3/50/60)		1	1	3	3	1	1	1	1
11019 (Domestic) (208/230/460/1/3/50/60)		2	2	1	1	3	1	3	1
11020 (Domestic) (208/230/460/1/3/50/60)		2	2	1	1	3	1	3	1
11021 (Canadian) (460/575/3/50/60)		2	2	2	2	4	2	4	1

Illustration of Sub Assemblies

PRO-CUT 80

For Codes: 10573 to 11024

Do Not use this Parts List for a machine if its code number is not listed. Contact the Service Department for any code numbers not listed.

Use the Illustration of Sub-Assemblies page and the table below to determine which sub assembly page and column the desired part is located on for your particular code machine.

↔ Sub Assembly Item No.			1	2	3	4	5	6	
SUB ASSEMBLY PAGE NAME ↔	Optional Equipment	Miscellaneous Items	Case Front Assembly	Base & Case Back	Center Panel Assembly	Output Board Heatsink	Power Board Heatsink	Wraparound Assembly	PCT 80 Torch & Cable
PAGE NO. →	P-340-B.1	P-340-B.2	P-340-C	P-340-D	P-340-E	P-340-F	P-340-G	P-340-H	P-210-K #
CODE NO. ↓									
11022 (Canadian) (460/575/3/50/60)		2	2	2	2	4	2	4	1
11023 (Export) (200/380-415/3/50/60)		2	2	3	3	3	1	3	1
...11024 (Export) (200/380-415/3/50/60)		2	2	3	3	3	1	3	1

Illustration of Sub Assemblies

OPTIONAL EQUIPMENT LISTING

Miscellaneous Options Available for your machine are listed below:

Indicates a change this printing.

DESCRIPTION	PART NUMBER
HF-Less Plasma Cutting Torch 25'	.Order K1571-1
HF-Less Plasma Cutting Torch 50'	.Order K1571-2
Combination Circle Kit	.Order K1625-1
Adapter Bushing 38 mm	.Order K1626-1
Suction Pivot	.Order K1628-1
Undercarriage	.Order K1681-1
Machine Torch & Cable Assembly 25'	.Order K1571-3
Machine Torch & Cable Assembly 50'	.Order K1571-4
Robotic Torch & Cable Assembly 25'	.Order K1571-5
Robotic Torch & Cable Assembly 50'	.Order K1571-6



Index of Sub Assemblies

Indicates a change this printing.

Use only the parts marked "x" in the column under the heading number called for in the model index page.

DESCRIPTION	PART NO.	QTY.	1	2	3	4	5	6	7	8	9
Plug & Lead Assembly (P3-P20-P32-P33)	S18250-593	1	X	•							
Plug & Lead Assembly (P5-P10)	S18250-594	1	X	X							
Plug & Lead Assembly (P1-P21-P30)	S18250-596	1	X	•							
Input Lead Assembly	S18573-6	1	X	X							
Rear Nameplate (Domestic)	S24357	1	X	X							
Rear Nameplate (Export)	S24461	1	X	X							
Rear Nameplate (Canadian)	S24462	1	X	X							
Plug & Lead Assembly	G4451	1	•	X							
Plug & Lead Assembly (P3-P20-P35-P33) (Can)	S18250-878	1	•	X							

Index of Sub Assemblies

NOTES

Index of Sub Assemblies

Index of Sub Assemblies

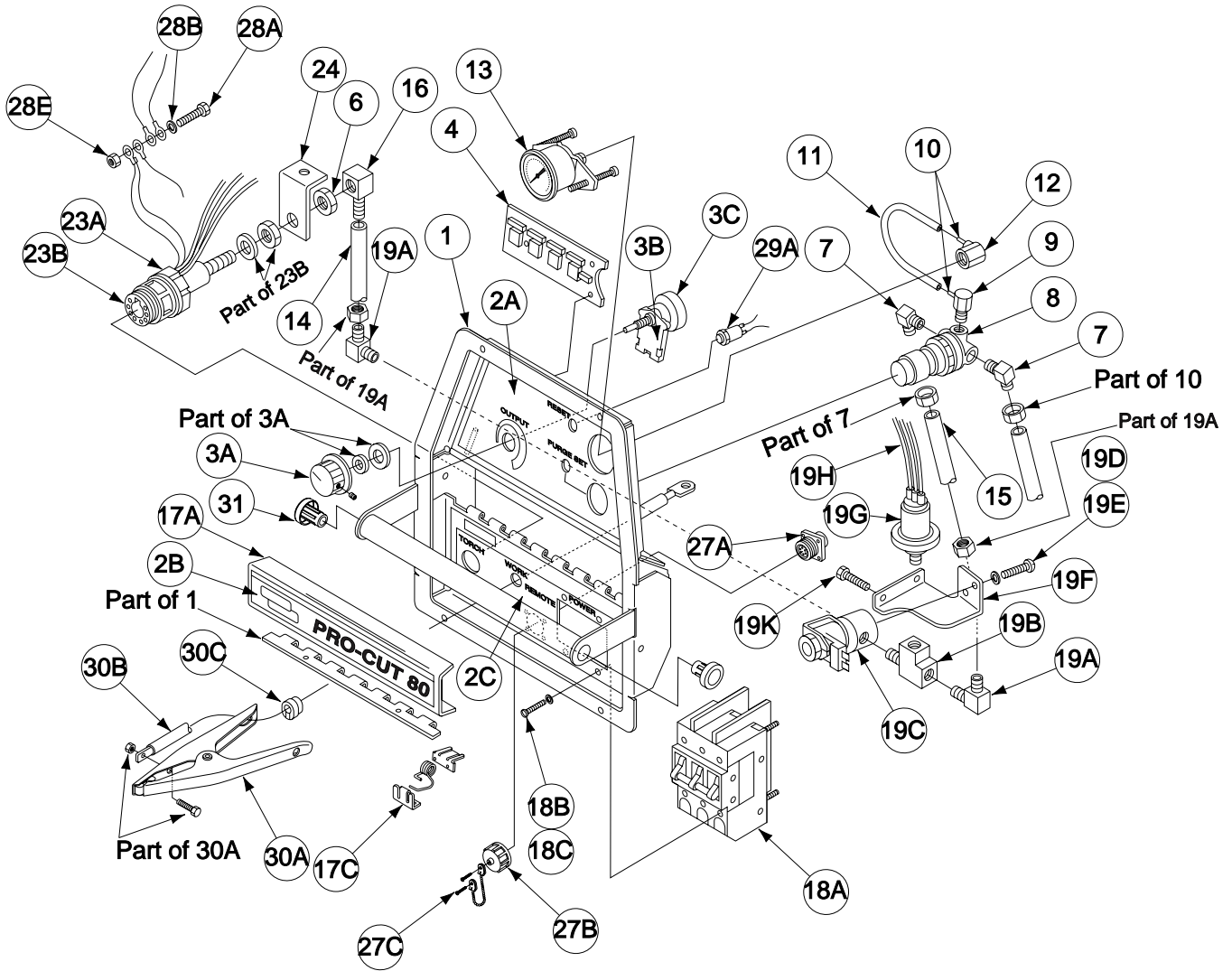
Index of Sub Assemblies

Index of Sub Assemblies

PRO-CUT 80



Case Front Assembly



Indicates a change this printing.

Use only the parts marked "x" in the column under the heading number called for in the model index page.

ITEM	DESCRIPTION	PART NO.	QTY.	1	2	3	4	5	6	7	8	9
1	Case Front Assembly, Includes:	L10867	1	X	•							
	Case Front Assembly, Includes:	L12103-1	1	•	X							
	Case Front Welded Assembly	M19080	1	X	X							
2A	Nameplate	L10718-1	1	X	X							
2B	Nameplate	L10718-2	1	X	X							
2C	Nameplate	L10718-3	1	X	X							
3A	Knob	T10491	1	X	X							
3B	Control Pot Spacer	S18280	1	X	X							
3C	Potentiometer	T10812-112	1	X	X							
4	Display Board	L10721-[]	1	X	•							
4	Display Board	L11649-[]	1	•	X							
5	Plug & Lead Assembly (Not Shown)	S18250-597	1	X	•							
5	Plug & Lead Assembly (Not Shown)	M20237	1	•	X							
6	Hex Nut (Brass)	S22990-2B	1	X	X							
7	90° Male Hose Elbow (Includes:Compression fitting)	S18451-2	2	X	X							
8	Pressure Regulator	S22184	1	X	X							
9	Elbow	S22155	1	X	X							
10	Hose Nipple (Male) (Threads into Item 12)	T14557-21	2	X	X							
11	Flex Tube	T10642-221	1	X	X							
12	Pipe Cap	S22154	1	X	X							
13	Pressure Gauge	S11395-4	1	X	X							
14	Flex Tube	T10642-220	1	X	X							
15	Flex Tube	T10642-232	1	X	X							
16	Hose Nipple	S23941	1	X	X							
17A	Case Front Door	M19084	1	X	X							
17B	Rivet (Not Shown)	T12584-4	4	X	X							
17C	Spring & Mounting Bracket	S24049	1	X	X							
17D	Decal (Not Shown)	S24364	1	X	X							
18A	Breaker Switch	M19234	1	X	X							
18B	#6-32 x .375 PPNHS	CF000337	4	X	X							
18C	Lock Washer	E106A-13	4	X	X							
19	Solenoid Assembly, Includes:	S18667-7	1	X	X							
19B	Street Tee	T14130	1	X	X							
19C	Solenoid Valve	NSS	1	X	X							
19D	#10-32 RHS	CF000113	2	X	X							
19E	Lock Washer	T9695-1	2	X	X							
19F	Solenoid Bracket	S23864	1	X	X							
19G	Pressure Switch	S18638-2	1	X	X							
19H	Plug Housing	S18249-4	1	X	X							
19J	Filter Screen (Not Shown)	S20829	1	X	X							
19K	Self Tapping Screw	S8025-70	2	X	X							
23A	Bulkhead Nut	S22990-2A	1	X	X							
23B	Plug & Lead Assembly (P-31)	S18250-592	1	X	•							
23B	Plug & Lead Assembly	M20268	1	•	X							
24	Rectifier Bracket Arm	T11655-6	1	X	X							
27A	Connector & Lead Assembly	S13100-222	1	X	•							
27B	Cable Connector Cap	S17062-3	1	X	X							
27C	Self Tapping Screw	S8025-96	4	X	X							
28	Ground Screw Assembly, Includes:	S18922	1	X	X							
28A	Thread Forming Screw	S9225-36	1	X	X							
28B	Lock Washer	T9695-1	1	X	X							

Index of Sub Assemblies
 Sub Assembly Illustration
 Index of Sub Assemblies
 Sub Assembly Illustration
 Index of Sub Assemblies
 Sub Assembly Illustration
 Index of Sub Assemblies
 Sub Assembly Illustration

Indicates a change this printing.

Use only the parts marked "x" in the column under the heading number called for in the model index page.

ITEM	DESCRIPTION	PART NO.	QTY.	1	2	3	4	5	6	7	8	9
28C	Plain Washer (Not Shown)	S9262-27	2	X	X							
28D	Lock Washer	E106A-1	1	X	X							
28E	#10-24 HN	CF000010	2	X	X							
29A	Pushbutton (Reset)	T15089	1	X	X							
29B	Purge (Reset) (Not Shown)	T15089	1	X	X							
30A	Ground Clamp Assembly	M12033	1	X	X							
30B	Work Lead	S11609-16	1	X	X							
30C	Strain Relief	T9274-3	1	X	X							
31	Handle Plug (Not Included on Older Models)	M19744	2	X	X							

Note: When ordering new printed circuit boards indicate the dash number [] of the "Old" board that is to be replaced. This will aid Lincoln in supplying the correct and latest board along with any necessary jumpers or adapters. The dash number brackets [] have purposely been left blank so as to eliminate errors, confusion and updates.

Index of Sub Assemblies
 Sub Assembly Illustration
 Index of Sub Assemblies
 Sub Assembly Illustration
 Index of Sub Assemblies
 Sub Assembly Illustration
 Index of Sub Assemblies
 Sub Assembly Illustration

NOTES

Index of Sub Assemblies

Index of Sub Assemblies

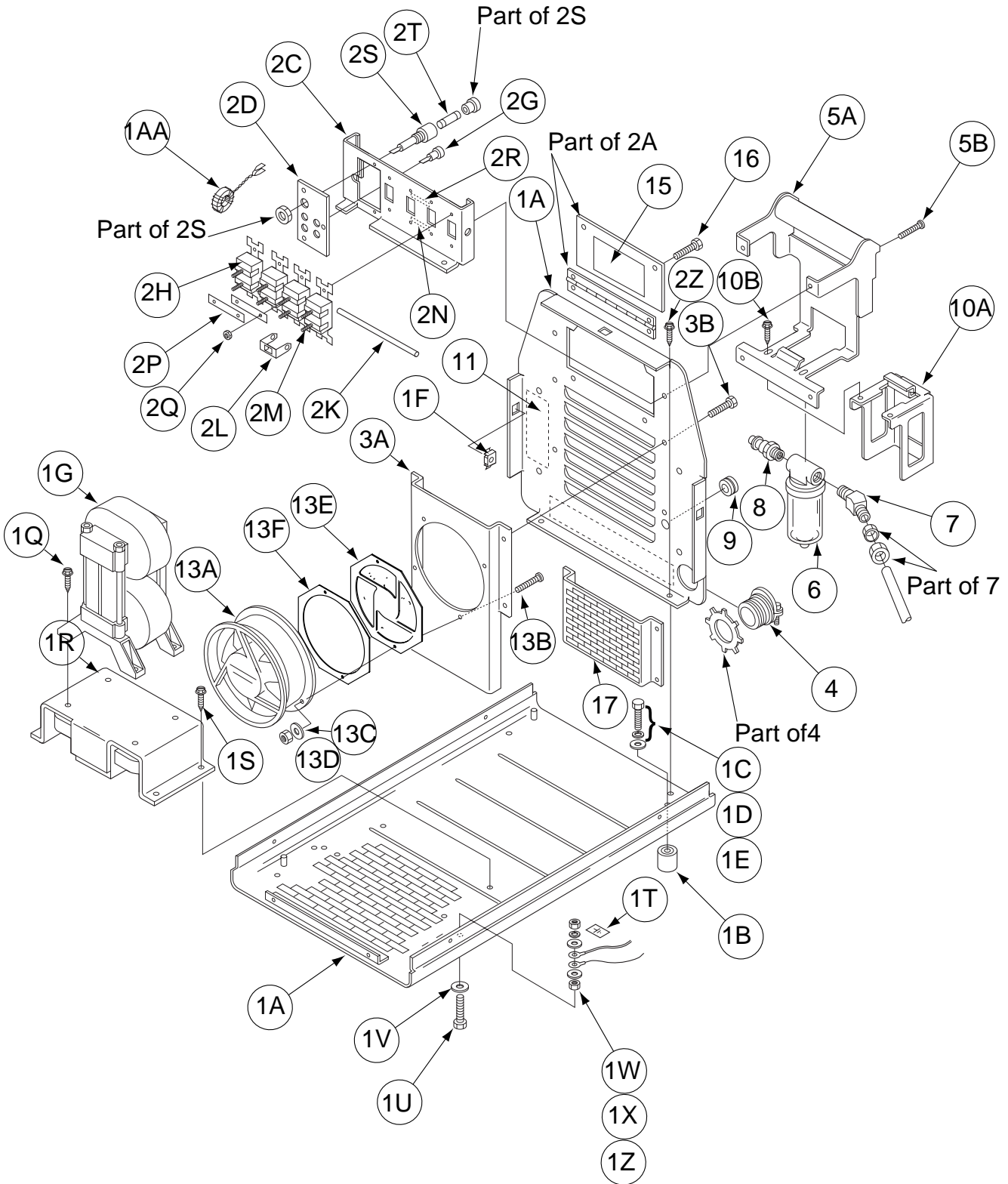
Index of Sub Assemblies

Index of Sub Assemblies

PRO-CUT 80



Base & Case Back



Index of Sub Assemblies
 Index of Sub Assemblies
 Index of Sub Assemblies
 Index of Sub Assemblies

Part Numbers
 Part Numbers
 Part Numbers
 Part Numbers

Indicates a change this printing.

Use only the parts marked "x" in the column under the heading number called for in the model index page.

ITEM	DESCRIPTION	PART NO.	QTY.	1	2	3	4	5	6	7	8	9
1A	Case Bottom Riveted Assembly	M19072	1	X	X	X						
1B	Rubber Isolator	S20979	4	X	X	X						
1C	3/8-16 x .75 HHCS	CF000034	4	X	X	X						
1D	Plain Washer	S9262-120	4	X	X	X						
1E	Lock Washer	E106A-16	4	X	X	X						
1F	Nut Retainer (Not Shown)	T10097-4	4	X	X	X						
1G	Main Transformer Assembly	G3447	1	X	•	•						
1G	Main Transformer Assembly	G3557	1	•	X	•						
1G	Main Transformer Assembly	G3555	1	•	•	X						
1Q	Thread Forming Screw	S9225-8	4	X	X	X						
1R	Choke Assembly, Includes:	L10870	1	X	X	X						
1S	Thread Forming Screw	S9225-8	4	X	X	X						
1T	Decal-Earth, Ground	T13260-4	1	X	X	X						
1U	Ground Screw Assembly, Includes:	S18922-4	2	X	X	X						
	Thread Forming Screw	S9225-17	1	X	X	X						
1V	Lock Washer	T9695-17	1	X	X	X						
1W	1/4-20 HN	CF000017	2	X	X	X						
1X	Plain Washer	S9262-98	2	X	X	X						
1Z	Lock Washer	E106A-2	1	X	X	X						
1AA	Toroidal Coil	S18444-6	1	X	X	X						
2A	Case Back Assembly, Includes:	M19073	1	X	X	X						
	Case Back	L10866	1	X	X	X						
	Access Door	S24181	1	X	X	X						
	Hinge	S21250-8	1	X	X	X						
	Rivet	T9701-3	4	X	X	X						
2C	Reconnect Bracket	M19152	1	X	X	X						
2D	Reconnect Panel Silkscreened	S24382	1	X	•	X						
2D	Reconnect Panel Silkscreened	S24450	1	•	X	•						
2E	Rivet (Not Shown)	T9701-4	2	X	X	X						
2F	Plain Washer (Not Shown)	S9262-39	2	X	X	X						
2G	Receptacle	T14530-1	4	X	X	X						
2H	Line Switch	S20456	3	X	X	X						
2J	#6-32 x .375 PPNHS (Not Shown)	CF000337	6	X	X	X						
2K	Switch Pin	S20322-1	1	X	•	X						
2K	Switch Pin	S20322-2	1	•	X	•						
2L	Reconnect Bus Bar	S20360	6	X	X	X						
2M	Carriage Bolt	T11827-46	6	X	X	X						
2N	Decal (200-230 V)	T13086-119	1	X	•	X						
2N	Decal (440-460 V)	T13086-157	1	•	X	•						
2P	Bus Bar	S11012-50	2	X	X	X						
2Q	#10-24 HN	CF000010	6	X	X	X						
2R	Decal (380-460V)	T13086-118	1	X	•	X						
2R	Decal (550-575V)	T13086-158	1	•	X	•						
2S	Fuse Holder	S10433-1	1	X	X	X						
2T	Fuse	T10728-30	2	X	X	X						
2U	Lead Assembly (Not Shown)	S23008	1	X	X	X						
2V	Plug & Lead Assembly (P22) (Not Shown)	S18250-609	1	X	•	X						
2W	Plug & Lead Assembly (P11) (Not Shown)	S18250-607	1	•	X	•						
2X	Plug & Lead Assembly (P22) (Not Shown)	S18250-608	1	•	X	•						
2Z	Self Tapping Screw	S8025-91	6	X	X	X						

Index of Sub Assemblies
 Sub Assembly Illustration
 Index of Sub Assemblies
 Sub Assembly Illustration
 Index of Sub Assemblies
 Sub Assembly Illustration
 Index of Sub Assemblies
 Sub Assembly Illustration

Indicates a change this printing.

Use only the parts marked "x" in the column under the heading number called for in the model index page.

ITEM	DESCRIPTION	PART NO.	QTY.	1	2	3	4	5	6	7	8	9
3A	Fan Shroud	L10885	1	X	X	X						
3B	Thread Forming Screw	S9225-65	2	X	X	X						
4	Box Connector	T9639-3	1	X	X	X						
5A	Filter Bracket Welded Assembly	M19077	1	X	X	X						
5B	Thread Forming Screw	S9225-65	4	X	X	X						
6	Air Filter, Includes: Filter Element	S22183 S22183-A	1 1	X X	X X	X X						
7	Elbow, 45°	S23007	1	X	X	X						
8	Pneumatic Nipple	S23044	1	X	X	X						
9	Grommet	S10255-5	1	X	X	X						
10A	Filter Guard	M18810	1	X	X	X						
10B	Self Tapping Screw	S8025-92	2	X	X	X						
11	Decal	T13086-86	1	X	X	X						
12	Nut Retainer	T10097-4	6	X	X	X						
13A	Fan (Tubeaxial)	M19076-1	1	X	X	X						
13B	#8-32 x .625 RHS	CF000053	2	X	X	X						
13C	Int. Lock Washer	T9695-3	2	X	X	X						
13D	#8-32 HN	CF000042	2	X	X	X						
13E	Fan Guard	S25680	1	X	X	X						
13F	Fan Spacer	S25681	1	X	X	X						
14	Warning Decal (Not Shown)	S20900	1	X	•	X						
14	Warning Decal (Not Shown)	S20900-1	1	•	X	•						
15	Connection Instruction	S21230	1	X	•	X						
15	Connection Instruction	S24180	1	•	X	•						
16	#10-24 x .50 HHCS	CF000371	2	X	X	X						
17	Louver Guard	M19111	1	X	X	X						

Index of Sub Assemblies
 Sub Assembly Illustration
 Index of Sub Assemblies
 Sub Assembly Illustration
 Index of Sub Assemblies
 Sub Assembly Illustration
 Index of Sub Assemblies
 Sub Assembly Illustration

NOTES

Index of Sub Assemblies

Index of Sub Assemblies

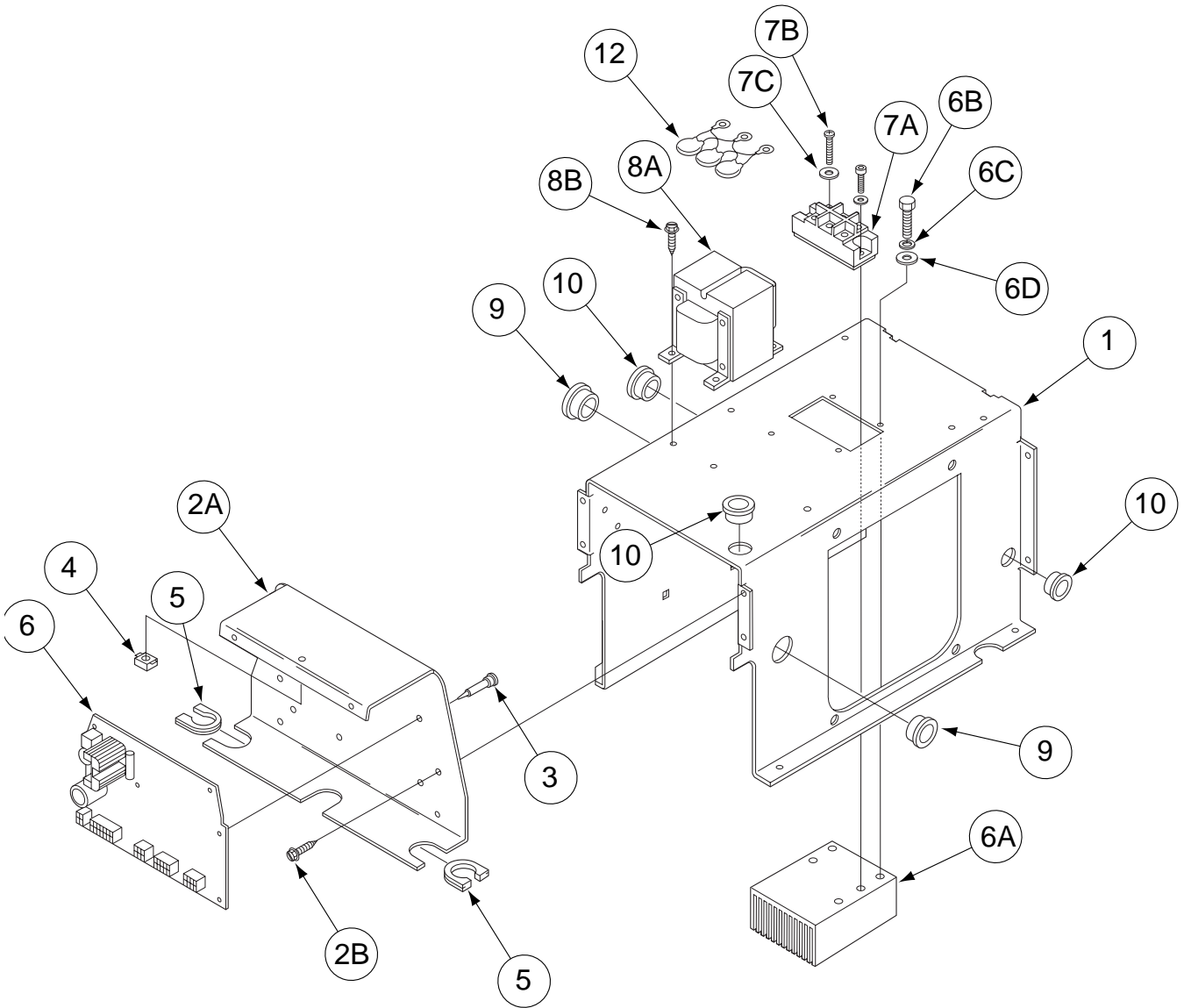
Index of Sub Assemblies

Index of Sub Assemblies

PRO-CUT 80



Center Panel Assembly



Index of Sub Assemblies

Part Numbers

Index of Sub Assemblies

Part Numbers

Index of Sub Assemblies

Part Numbers

Index of Sub Assemblies

Part Numbers

Indicates a change this printing.

Use only the parts marked "x" in the column under the heading number called for in the model index page.

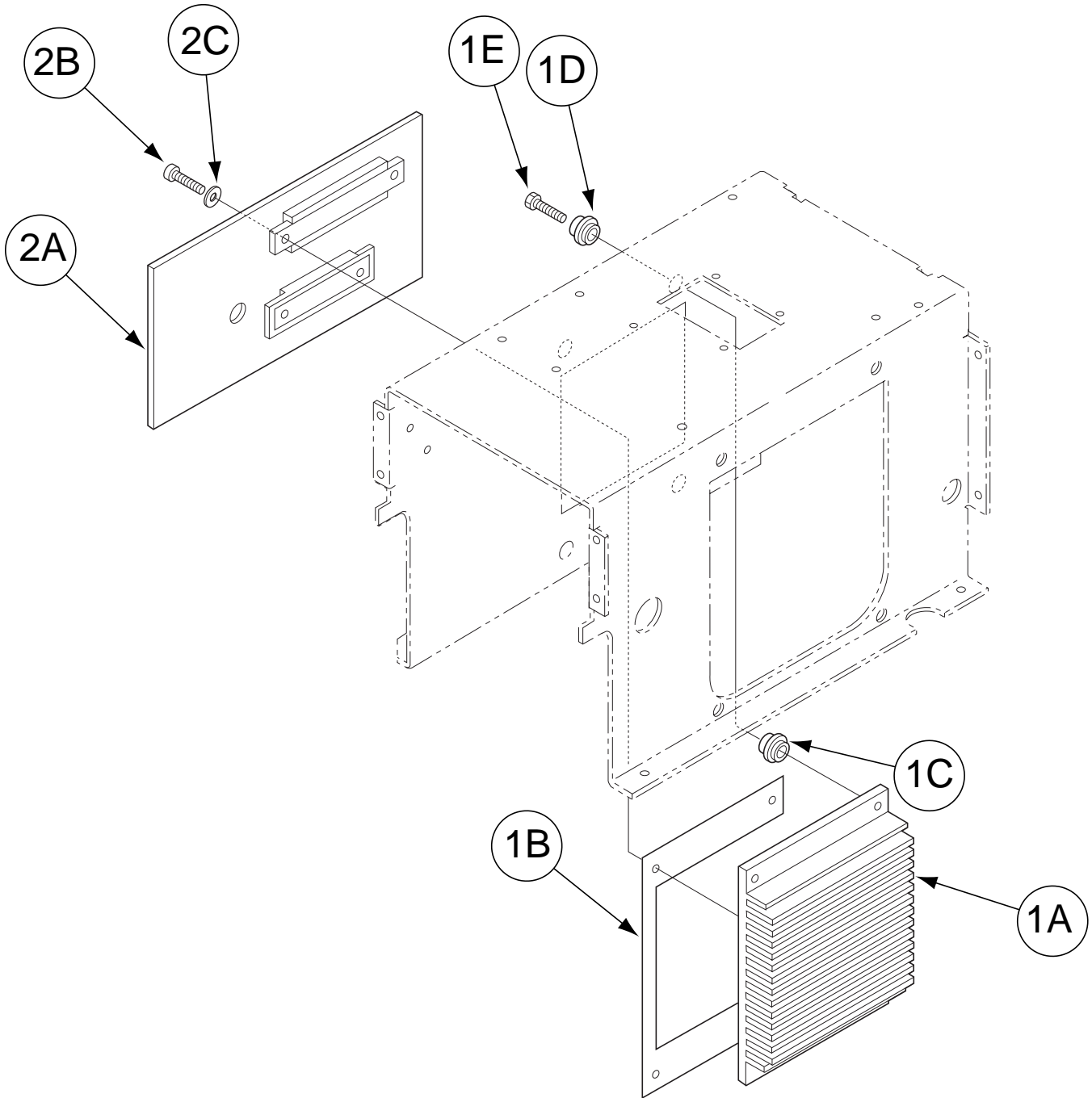
ITEM	DESCRIPTION	PART NO.	QTY.	1	2	3	4	5	6	7	8	9
1	Center Panel	L10871	1	X	X	X						
2A	Control Box	M19078	1	X	X	X						
2B	Self Tapping Screw	S8025-70	4	X	X	X						
3	Support, PCB	S19300-2	8	X	X	X						
4	Nut Retainer	T10097-4	1	X	X	X						
5	Grommet	S18543-1	3	X	X	X						
6	Control P.C. Board Assembly	G3443-[]	1	X	•	•						
6	Control P.C. Board Assembly	G3559-[]	1	•	•	X						
6	Control P.C. Board Assembly	G3560-[]	1	•	X	•						
6A	Rectifier Heat Sink	S24183	1	X	X	X						
6B	1/4-20 x .50 HHCS	CF000012	3	X	X	X						
6C	Lock Washer	E106A-2	3	X	X	X						
6D	Plain Washer	S9262-98	3	X	X	X						
7A	Rectifier Module	M15454-8	1	X	•	X						
7A	Rectifier Module	M15454-6	1	•	X	•						
7B	Socket Head Cap Screw	T9447-10	2	X	X	X						
7C	Spring Washer	T12735-4	2	X	X	X						
8A	Auxiliary Transformer Assembly	M16085-15	1	X	X	X						
8B	Thread Forming Screw	S9225-30	4	X	X	X						
9	Grommet	T12380-4	3	X	X	X						
10	Grommet	T12380-8	2	X	X	X						
11A	Thermostat & Holder (Not Shown)	S24360	1	X	X	X						
11B	Self Tapping Screw (Not Shown)	S8025-113	2	X	X	X						
12	Mov Assembly	S18491-1	1	X	X	X						
13	Grommet	S10255-5	1	X	X	X						

#

Note: When ordering new printed circuit boards indicate the dash number [] of the "Old" board that is to be replaced. This will aid Lincoln in supplying the correct and latest board along with any necessary jumpers or adapters. The dash number brackets [] have purposely been left blank so as to eliminate errors, confusion and updates.

Index of Sub Assemblies
 Sub Assembly Illustration
 Index of Sub Assemblies
 Sub Assembly Illustration
 Index of Sub Assemblies
 Sub Assembly Illustration
 Index of Sub Assemblies
 Sub Assembly Illustration

Output Board Heatsink



Index of Sub Assemblies

Part Numbers

Index of Sub Assemblies

Part Numbers

Index of Sub Assemblies

Part Numbers

Index of Sub Assemblies

Part Numbers

Indicates a change this printing.

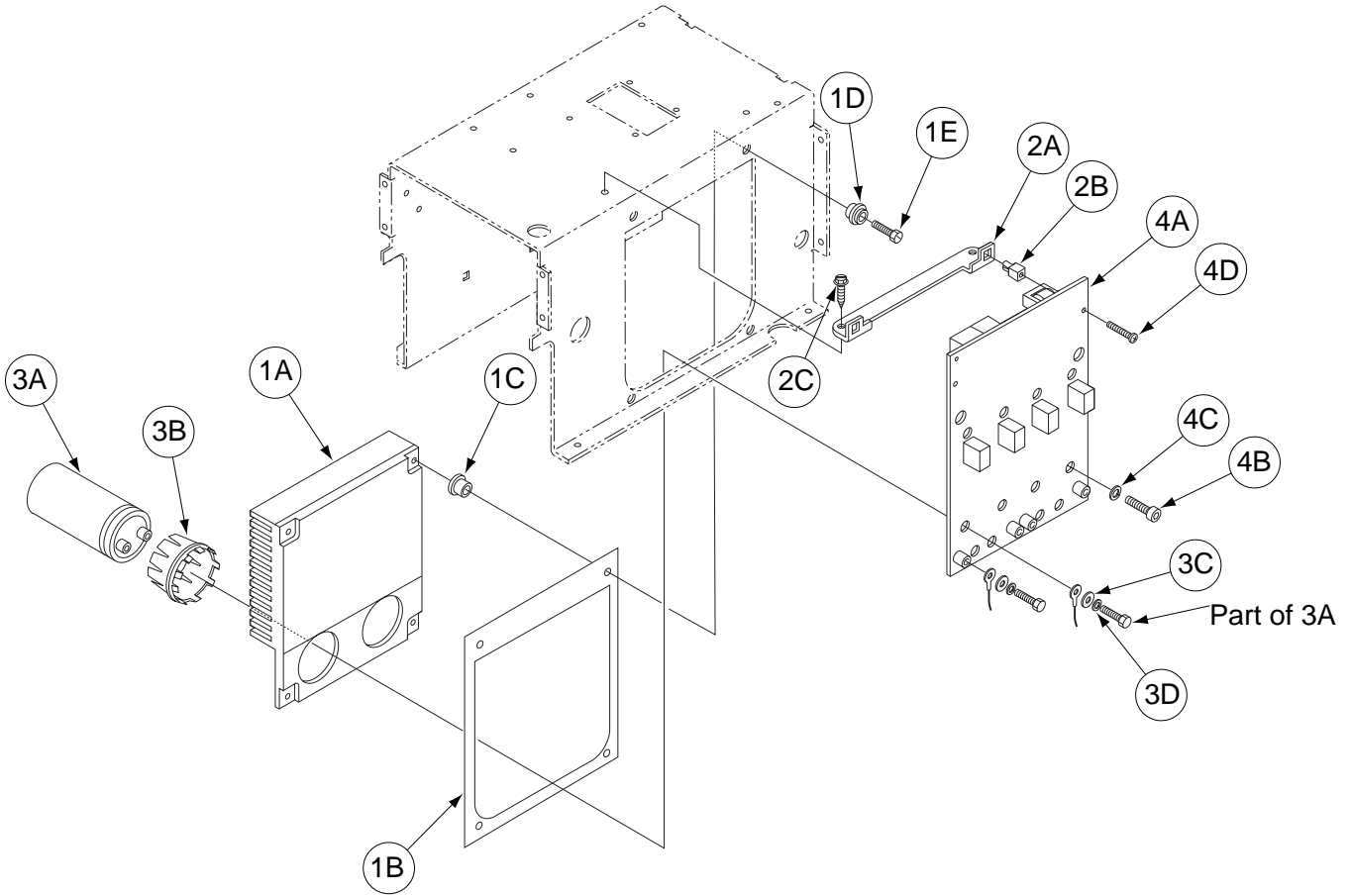
Use only the parts marked "x" in the column under the heading number called for in the model index page.

ITEM	DESCRIPTION	PART NO.	QTY.	1	2	3	4	5	6	7	8	9
1A	Output Board Heatsink	M19075	1	X	X	X	X					
1B	Output Board Insulation	S24407	1	X	X	X	X					
1C	Insulator	T11267-A	4	X	X	X	X					
1D	Insulator	T11267-B	4	X	X	X	X					
1E	Thread Forming Screw	S9225-17	4	X	X	X	X					
2A	Output P.C. Board Assembly	G3439-[]	1	X	•	•	•					
2A	Output P.C. Board Assembly	G3558-[]	1	•	X	•	•					
2A	Output P.C. Board Assembly	G4277-[]	1	•	•	X	•					
2A	Output P.C. Board Assembly	G4278-[]	1	•	•	•	X					
2B	Socket Head Cap Screw	T9447-9	4	X	X	X	X					
2C	Lock Washer	E106A-2	4	X	X	X	X					
2D	Self Tapping Screw (Not Shown)	S8025-71	4	X	X	X	X					
2E	P.C. Board Standoff (Not Shown)	S14020-3	4	X	X	X	X					

Note: When ordering new printed circuit boards indicate the dash number [] of the "Old" board that is to be replaced. This will aid Lincoln in supplying the correct and latest board along with any necessary jumpers or adapters. The dash number brackets [] have purposely been left blank so as to eliminate errors, confusion and updates.

Index of Sub Assemblies
 Sub Assembly Illustration
 Index of Sub Assemblies
 Sub Assembly Illustration
 Index of Sub Assemblies
 Sub Assembly Illustration
 Index of Sub Assemblies
 Sub Assembly Illustration

Power Board Heatsink



Index of Sub Assemblies

Part Numbers

Index of Sub Assemblies

Part Numbers

Index of Sub Assemblies

Part Numbers

Index of Sub Assemblies

Part Numbers

Indicates a change this printing.

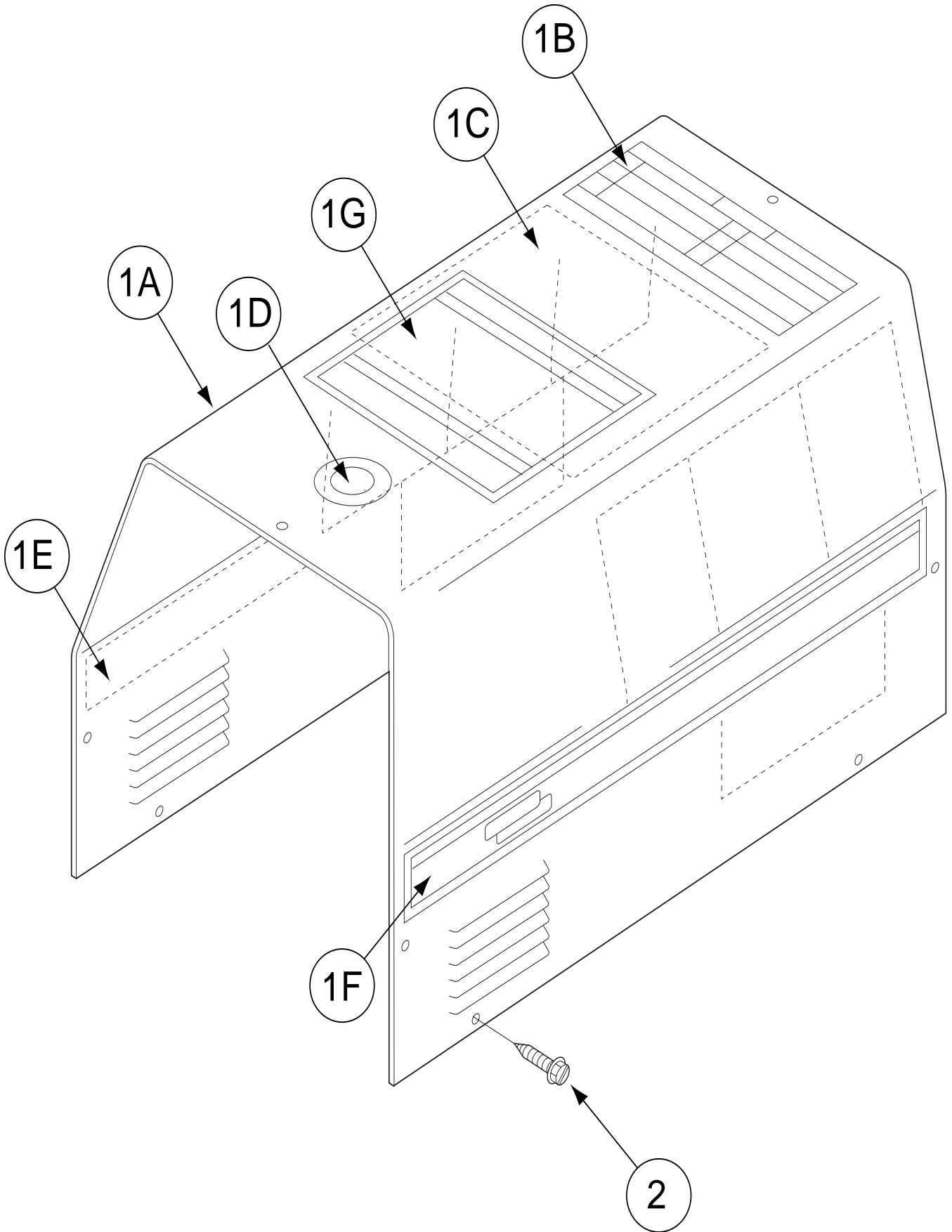
Use only the parts marked "x" in the column under the heading number called for in the model index page.

ITEM	DESCRIPTION	PART NO.	QTY.	1	2	3	4	5	6	7	8	9
1A	Power Board Heatsink	L10868	1	X	X							
1B	Power Board Insulation	M19149	1	X	X							
1C	Insulator	T11267-A	4	X	X							
1D	Insulator	T11267-B	4	X	X							
1E	Thread Forming Screw	S9225-45	4	X	X							
2A	Power Board Bracket	S24182	1	X	X							
2B	P.C. Board Standoff	S14020-3	2	X	X							
2C	Self Tapping Screw	S8025-71	2	X	X							
3A	Capacitor	S13490-166	2	X	•							
3A	Capacitor	S13490-169	2	•	X							
3B	Capacitor Bracket	M19144	2	X	X							
3C	Plain Washer	S9262-23	8	X	X							
3D	Lock Washer	E106A-2	4	X	X							
4A	Power P.C. Bd Asbly (Codes 10573, 10574,10577, 10578, 11019, 11020, 11023 & 11024)	G3440-[]	1	X	•							
4A	Power P.C. Board Asbly (Codes 10575, 10576, 11021 & 11022)	G3579-[]	1	•	X							
4B	Socket Head Cap Screw	T9447-9	8	X	X							
4C	Lock Washer	E106A-2	8	X	X							
4D	Self Tapping Screw	S8025-71	2	X	X							

Note: When ordering new printed circuit boards indicate the dash number [] of the "Old" board that is to be replaced. This will aid Lincoln in supplying the correct and latest board along with any necessary jumpers or adapters. The dash number brackets [] have purposely been left blank so as to eliminate errors, confusion and updates.

Index of Sub Assemblies
 Sub Assembly Illustration
 Index of Sub Assemblies
 Sub Assembly Illustration
 Index of Sub Assemblies
 Sub Assembly Illustration
 Index of Sub Assemblies
 Sub Assembly Illustration

Wraparound Assembly



Index of Sub Assemblies

Part Numbers

Index of Sub Assemblies

Part Numbers

Index of Sub Assemblies

Part Numbers

Index of Sub Assemblies

Part Numbers

Indicates a change this printing.

Use only the parts marked "x" in the column under the heading number called for in the model index page.

ITEM	DESCRIPTION	PART NO.	QTY.	1	2	3	4	5	6	7	8	9
1A	Wraparound	L10884	1	X	X	X	X					
1B	Warning Decal	S19720	1	X	X	X	X					
1C	Wiring Diagram	L10936	1	X	•	•	•					
1C	Wiring Diagram	L11031	1	•	X	•	•					
1C	Wiring Diagram	L12068	1	•	•	X	•					
1C	Wiring Diagram	L12069	1	•	•	•	X					
1D	Decal - Warranty	S22127-1	1	X	X	X	X					
1E	Side Decal (Left)	L10719-L	1	X	X	X	X					
1F	Side Decal (Right)	L10719-R	1	X	X	X	X					
1G	Operation Decal	M19126	1	X	X	X	X					
2	#10-24x.50 HHCS	CF000371	1	X	X	X	X					

Index of Sub Assemblies
 Sub Assembly Illustration
 Index of Sub Assemblies
 Sub Assembly Illustration
 Index of Sub Assemblies
 Sub Assembly Illustration
 Index of Sub Assemblies
 Sub Assembly Illustration

NOTES

Index of Sub Assemblies

Index of Sub Assemblies

Index of Sub Assemblies

Index of Sub Assemblies

PRO-CUT 80

