

# TXH™ TIG Torches

## For quality welding

### Standard packages for common applications

TXH™ torches are made with the welder in mind...

- The major characteristics of the TXH™ torch program is its quality. The torches are designed to provide the utmost in convenience, versatility and ergonomics to the user.
- You can choose between air-cooled and water cooled, with or without gas-valve and with or without a flexible neck to suit your individual application.

### Torch Heads Lightweight and Durable

- Manufactured with high temperature resistant silicone rubber insulation
- All copper components ensure cooler running temperatures and maximum current capacity.

### Ergonomic Handle System - Ergonomically Superior

- Integrated dual soft grips ensure the handle remains in place with minimal grip pressure.

### Knuckle Joint – Improved Manoeuvrability

- Positioning of the torch is made easier by the combination of knuckle joints and a flexible leather section covering the first 800mm of the torch immediately behind the handle.

### Front End Consumables

- Compatible with previous TXH™ range.

### Quality Systems

- All torches are designed to be tough and damage resistant and comply with EN60974-7, GOST-R & CCC.



- 120A torch for perfect access in confined areas and equipped with a precision switch
- Effective cooling system
- Ergonomic handle
- Knuckle joint gives improved manoeuvrability
- Built-in gas valve for manual control of the shielding gas. (TXH™ 121V, 151V and 201V only)
- Flexible heads offer versatility for hard to reach applications. (TXH™ 121F, 151F, 201F and 251F only)
- For use with all TIG machines with OKC-connection. (Central connection with adapter)
- Remote versions available for CAN-bus controlled machines
- TXH™ 401w HD for heavy duty applications up to 430 A

## Ordering information

### Air cooled torches

TXH™ 121, 4 m, OKC 25C,	0700 300 522 **)
TXH™ 121V, 4 m, OKC 25	0700 300 523
TXH™ 121, 4 m, OKC 50	0700 300 524
TXH™ 121F, 4 m, OKC 25	0700 300 525
TXH™ 121F, 4 m, OKC 50	0700 300 526
TXH™ 121, 8 m, OKC 25C	0700 300 527 **)
TXH™ 121V, 8 m, OKC 25	0700 300 528
TXH™ 121, 8 m, OKC 50	0700 300 529
TXH™ 121F, 8 m, OKC 25	0700 300 530
TXH™ 121F, 8 m, OKC 50	0700 300 531
TXH™ 121, 4 m, OKC 25	0700 300 532 *)
TXH™ 121, 8 m, OKC 25	0700 300 534

TXH™ 151, 4 m, OKC 25C	0700 300 536 **)
TXH™ 151V, 4 m, OKC 25	0700 300 537
TXH™ 151, 4 m, OKC 50	0700 300 538
TXH™ 151V, 4 m, OKC 50	0700 300 539
TXH™ 151F, 4 m, OKC 25	0700 300 540
TXH™ 151F, 4 m, OKC 50	0700 300 541
TXH™ 151 8 m, OKC 25C	0700 300 542 **)
TXH™ 151V, 8 m, OKC 25	0700 300 543
TXH™ 151, 8 m, OKC 50	0700 300 544
TXH™ 151V, 8 m, OKC 50	0700 300 545

TXH™ 151F, 8 m, OKC 25	0700 300 546
TXH™ 151F, 8 m, OKC 50	0700 300 547
TXH™ 151, 4 m, OKC 25	0700 300 548 *)
TXH™ 151, 8 m, OKC 25	0700 300 550 *)
TXH™ 201, 4 m, OKC 50	0700 300 552
TXH™ 201V, 4 m, OKC 50	0700 300 553
TXH™ 201F, 4 m, OKC 50	0700 300 554
TXH™ 201, 8 m OKC 50	0700 300 555
TXH™ 201V, 8 m, OKC 50	0700 300 556
TXH™ 201F, 8 m, OKC 50	0700 300 557
TXH™ 201, 4 m, OKC 25	0700 300 558
TXH™ 201F, 4 m, OKC 25	0700 300 559
TXH™ 201, 8 m, OKC 25	0700 300 560

### Water cooled torches

TXH™ 251w, 4 m, OKC 50	0700 300 561
TXH™ 251wF, 4 m, OKC 50	0700 300 562
TXH™ 251w, 8 m, OKC 50	0700 300 563
TXH™ 251wF, 8 m, OKC 50	0700 300 564
TXH™ 401w, 4 m, OKC 50	0700 300 565
TXH™ 401w HD, 4 m, OKC 50	0700 300 566
TXH™ 401w, 8 m, OKC 50	0700 300 567
TXH™ 401w HD, 8 m, OKC 50	0700 300 568


### Remote control torches

TXH™ 121r, 4 m, OKC 50,	0700 300 620
TXH™ 121Fr, 4 m, OKC 50	0700 300 621
TXH™ 121r, 8 m, OKC 50	0700 300 622
TXH™ 151r, 4 m, OKC 50	0700 300 624
TXH™ 151Fr, 4 m, OKC 50	0700 300 625
TXH™ 151r, 8 m, OKC 50	0700 300 626
TXH™ 151Fr, 8 m, OKC 50	0700 300 627
TXH™ 201r, 4 m, OKC 50	0700 300 628
TXH™ 201Fr, 4 m, OKC 50	0700 300 629
TXH™ 201r, 8 m, OKC 50	0700 300 630
TXH™ 201Fr, 8 m OKC50	0700 300 631
TXH™ 251wr, 4 m OKC 50	0700 300 632
TXH™ 251wFr, 4 m, OKC50	0700 300 633
TXH™ 251wr, 8 m, OKC 50	0700 300 634
TXH™ 251wFr, 8 m, OKC 50	0700 300 635
TXH™ 401wr, 4 m OKC 50	0700 300 636
TXH™ 401wr HD, 4 m, OKC 50	0700 300 637
TXH™ 401wr, 8 m, OKC 50	0700 300 638
TXH™ 401wr HD, 8 m, OKC 50	0700 300 639

\*) Only Origo™ Tig 150i F = Flexible head

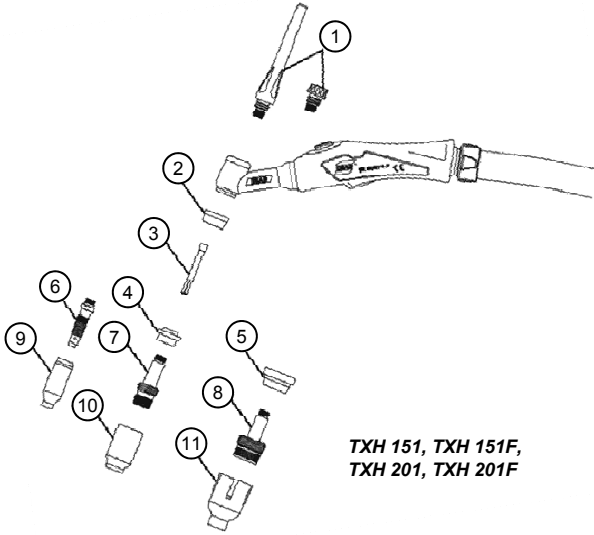
\*\*\*) Only Caddy® Tig 150i V = Gas valve

## Technical data

	TXH™ 121	TXH™ 151	TXH™ 201	TXH™ 251w	TXH™ 401w	TXH™ 401w HD
Permitted load at 35% duty cycle		150 A	200 A		400 A	430A
60% duty cycle	120 A	120 A	150 A	250 A	350 A	400A
100% duty cycle	100 A	100 A	140 A	200 A	300 A	
 Ø mm	1.0-3.2	1.0-3.2	1.0-4.0	1.0-3.2	1.0-4.8	1.0-4.8

## Wear parts

For further information please contact your ESAB representative



TXH 151, TXH 151F,  
TXH 201, TXH 201F

### General example

		TXH™ 121/251w	TXH™ 151/201	TXH™ 401w/401w HD
① Back cap	Long	<b>0365 310 051</b>	<b>0157 123 029</b>	<b>0157 123 029</b>
	Medium	0365 310 050	0588 000 591	0588 000 591
	Short	<b>0365 310 049</b>	0157 123 028	0157 123 028
② Heat shield		0366 960 017	<b>0366 960 016</b>	<b>0366 960 018</b>
	Heat shield	-	0366 960 020	-
④ Heat shield – ⑤ extra large gas lens		-	0366 960 021	-
		-	-	-
③ Collet standard and for gas lens	Ø 1.0	0365 310 028	0157 123 010	0157 123 010
	Ø 1.6	0365 310 029	0157 123 011	0157 123 011
	Ø 2.4	<b>0365 310 030</b>	<b>0157 123 012</b>	-
	Ø 3.2	0365 310 091	0157 123 013	-
	Ø 4.0	-	0157 123 014	-
Collet body Heavy Duty	Ø 2.4	-	-	<b>0157 123 077</b>
	Ø 3.2	-	-	0157 123 078
	Ø 4.0	-	-	0157 123 079
	Ø 4.8	-	-	0157 123 074
⑥ Collet body Standard	Ø 1.0	0365 310 037	0157 123 015	-
	Ø 1.6	0365 310 038	0157 123 016	-
	Ø 2.4	<b>0365 310 039</b>	<b>0157 123 017</b>	-
	Ø 3.2	0365 310 090	0157 123 018	-
	Ø 4.0-4.8	-	0157 123 019	-
	Ø 0.5-2.4 Ø 3.2-4.0	-	-	<b>0157 123 081</b> 0157 123 082
⑦ Collet body with gas lens	Ø 1.0	0157 121 016	0157 123 021	0157 123 091
	Ø 1.6	0157 121 017	0157 123 022	0157 123 092
	Ø 2.4	0157 121 018	0157 123 023	0157 123 093
	Ø 3.2	0157 121 041	0157 123 024	0157 123 094
	Ø 4.0	-	0157 123 025	0157 123 095
	Ø 4.8	-	-	0157 123 075
⑧ Collet body with extra large gas lens	Ø 1.0	-	0157 123 083	-
	Ø 1.6	-	0157 123 084	-
	Ø 2.4	-	0157 123 085	-
	Ø 3.2	-	0157 123 086	-
	Ø 4.0-4.8	-	0157 123 087	-
⑨ Gas nozzles Standard	Ø 6.4	0365 310 044	0157 123 052	-
	Ø 8.0	0365 310 045	0157 123 053	-
	Ø 9.8	<b>0365 310 046</b>	0157 123 054	-
	Ø 11.2	0365 310 047	<b>0157 123 055</b>	-
	Ø 12.7	0365 310 048	0157 123 056	-
	Ø 15.9	0588 000 440	0588 000 442	-
	Ø 19.0	-	0588 000 441	-
⑩ Gas nozzles for gas lens	Ø 6.4	0157 121 032	0157 123 057	0157 123 057
	Ø 8.0	0157 121 033	0157 123 058	0157 123 058
	Ø 9.8	0157 121 034	0157 123 059	0157 123 059
	Ø 11.2	0157 121 039	0157 123 060	0157 123 060
	Ø 12.7	0157 121 040	0157 123 061	<b>0157 123 061</b>
	Ø 17.5	-	0588 000 439	-
⑪ Extra large gas nozzle for extra large gas lens	Ø 9.8	-	0157 123 088	-
	Ø 12.7	-	0157 123 089	-
	Ø 15.9	-	0588 000 438	-
	Ø 19.0	-	0157 123 098	-
	Ø 24.0	-	0588 000 437	-

### Tungsten electrodes

Dimension (mm) Eco

	W L = 150	W L = 175
1.6 mm	-	0151 574 009
2.0 mm	0151 574 245	-
2.4 mm	0151 574 210	0151 574 010
3.2 mm	0151 574 211	0151 574 011
4.0 mm	-	0151 574 012
	WT20 L = 150	WT20 L = 175
1.6 mm	0151 574 202	0151 574 002
2.0 mm	0151 574 244	-
2.4 mm	0151 574 203	0151 574 003
3.2 mm	0151 574 204	0151 574 004
4.0 mm	-	0151 574 005
	WC20 L = 150	WC20 L = 175
1.0 mm	-	-
1.6 mm	0151 574 237	0151 574 037
2.0 mm	0151 574 242	-
2.4 mm	0151 574 238	0151 574 038
3.2 mm	0151 574 239	0151 574 039
4.0 mm	-	0151 574 040
	GoldPlus L = 150	GoldPlus L = 175
1.0 mm	-	0151 574 050
1.6 mm	-	0151 574 051
2.0 mm	0151 574 232	-
2.4 mm	-	0151 574 052
3.2 mm	-	0151 574 053
4.0 mm	-	0151 574 054
4.8 mm	-	0151 574 055

Bold = standard delivery

www.esab.com

